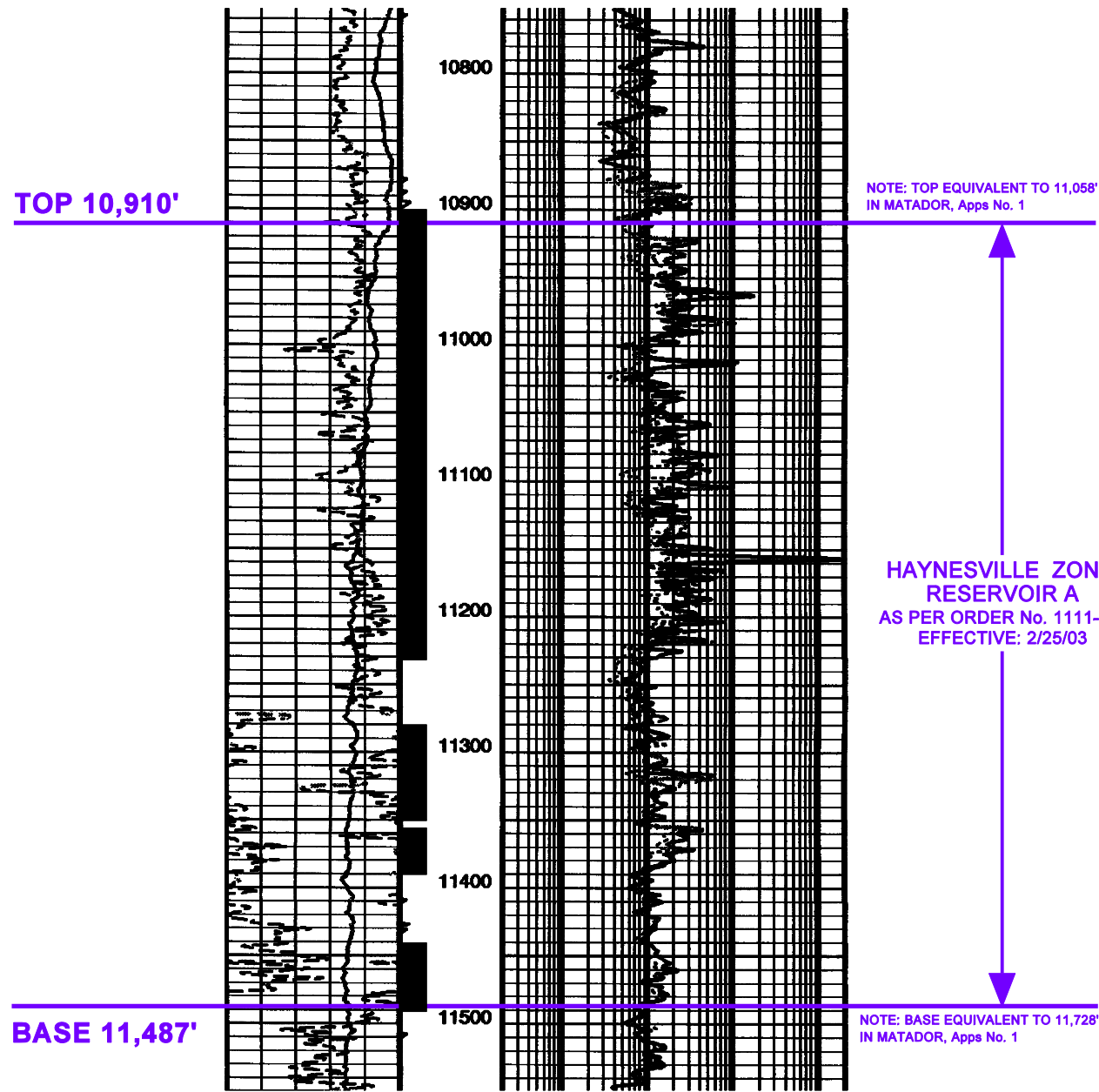


Ash-All Operating, Inc.
Lowerings No. 19-1
 Section 19, T20N-R12W
 Webster Parish, Louisiana
 Serial No. 200002



NOTE: TOP EQUIVALENT TO 11,058'
 IN MATADOR, Apps No. 1

HAYNESVILLE ZONE,
 RESERVOIR A
 AS PER ORDER No. 1111-Z-2
 EFFECTIVE: 2/25/03

NOTE: BASE EQUIVALENT TO 11,728'
 IN MATADOR, Apps No. 1

COMPLETED: 12/2/08
 HAYNESVILLE FORMATION
 IP: 231 MCF; 0 BOPD; 10 BWPD
 CHK: 48/64"; FTP: 125 PSIG

PERFS: 10,900' - 11,230'
 11,280' - 11,350'
 11,355' - 11,390'
 11,440' - 11,490'

DT-1: 10/23/08
 40 MCFGD; 6 BW
 FTP: 513 PSIG; CHK: OPEN
 SITP: 2,174 PSIG

CUMS: 533,973 MCFG
 THRU 3/1/09

EXHIBIT No. 2 DOCKET No. 09-0001

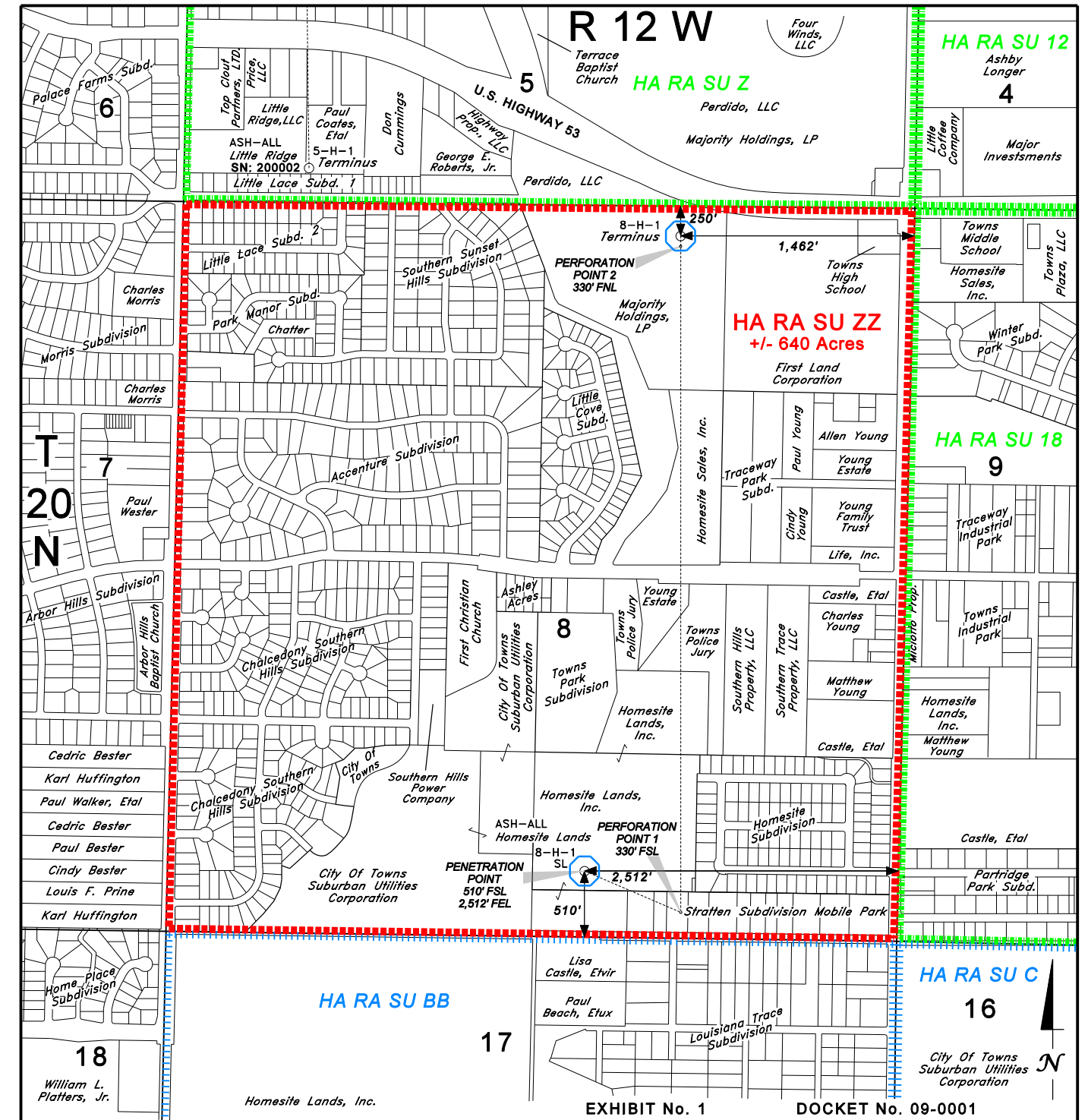
ASH-ALL OPERATING, INC.

EAST TOWNS FIELD
 WEBSTER PARISH, LOUISIANA

Definition Log
Haynesville Zone, Reservoir A

Date: JANUARY 1, 2009

Geology:



- PROPOSED ALTERNATE UNIT WELL
- PROPOSED UNIT
- EXISTING HA UNITS (EAST TOWNS FIELD)
- EXISTING HA UNITS (OFF RIDGE FIELD)

NOTE: ALL UNIT BOUNDARIES
 ARE GEOGRAPHIC.

NOTE: NO WELL WILL BE
 PERFORATED LESS
 THAN 330' FROM ANY UNIT LINES.



ASH-ALL OPERATING, INC.

EAST TOWNS FIELD
 WEBSTER PARISH, LOUISIANA

Proposed Unit & Unit Well
Haynesville Zone, Reservoir A

Date: JANUARY 1, 2009



Geology: