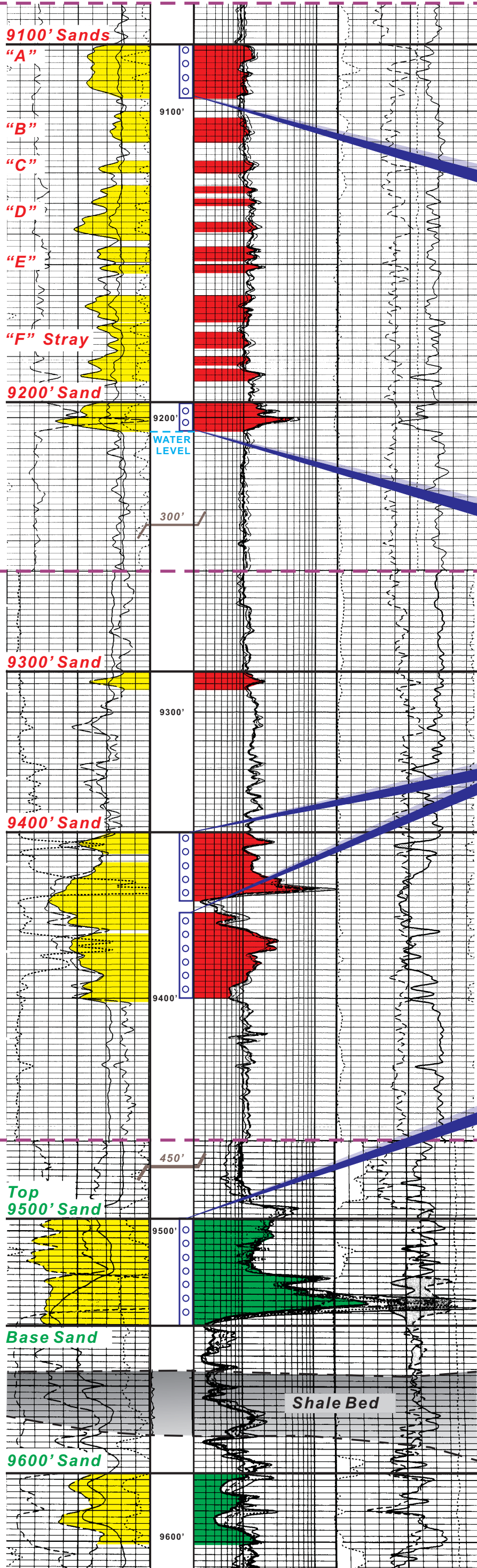


COMPOSITE TYPE LOG

BRELAND OIL
Laty No. 1
 SECTION 3, T 2 S-R 32 E

BRELAND OIL
Laty No. 12
 SECTION 2, T 2 S-R 32 E

BRELAND OIL
Laty No. 7
 SECTION 35, T 1 S-R 32 E



PERF: 9,078'-9,095'
 I.P.
 205 MCFPD
 25 BOPD
 FTP: 500#
 CHK: 10/64"

PERF: 9,195'-9,204'
 I.P.
 170 MCFPD
 30 BOPD
 FTP: 550#
 CHK: 10/64"

PERF: 9,342'-9,366'
 I.P.
 9,370'-9,400'
 520 MCFPD
 95 BOPD
 FTP: 525#
 CHK: 10/64"

PERF: 9,496'-9,530'
 I.P.
 230 BOPD
 30 MCFD
 FTP: 500#
 CHK: 7/64"