

626

1200' / 14,400'  
15,195' 3.441  
3.636

MIDWEST  
Savoie No. 1

642

525' East  
1300' / 15,250' 3.647  
400' / 17,370' 4.109  
17,340' EST. DN 4.107  
15,558' 3.712

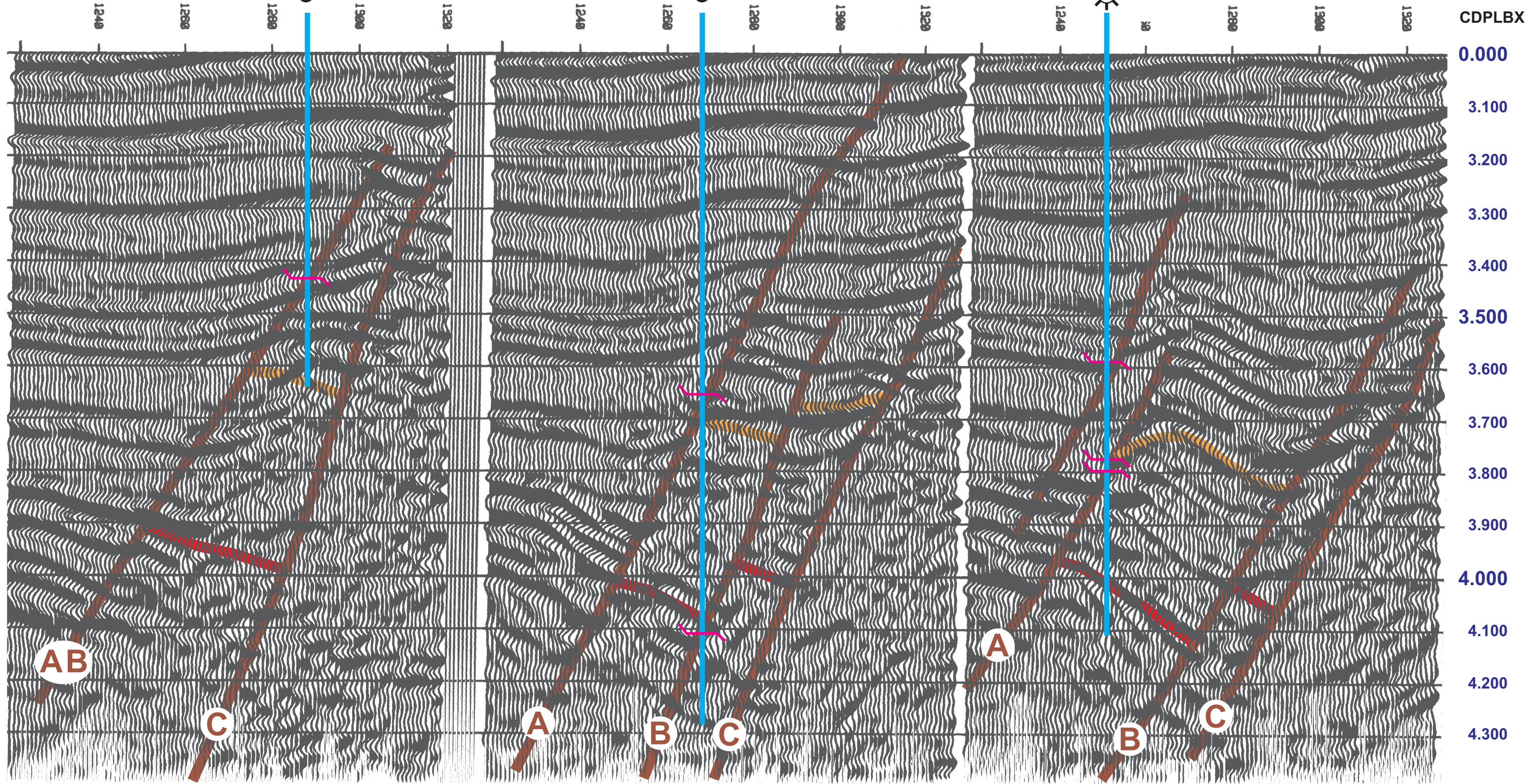
DANT  
Pierre No. 1

658

50' East  
125' / 15,020' 3.598  
850' / 15,800' 3.762  
550' / 15,950' 3.794  
16,870' 4.004

DEAS  
Menard No. 1

CDPLBLS



WEST ONVILLE 3D Migration Inlines